



75 TON MOBILIFT

by
LIFT SYSTEMS, INC.



***Global Leaders in Specialized
Lifting Equipment!***



MOBILIFT

75 TON

STANDARD EQUIPMENT

ENGINE:

Cummins Diesel Engine: QSB3.3P
108 hp (81 Kw) intermittent @ 2200 rpm
U.S. EPA Tier 3
CARB Tier 3
EU Stage III
Torque @ 1600 rpm, 306 ft-lbs (415 N-m)

PUMP:

Sundstrand 90 series drive pump

CONTROL SYSTEM:

CARL (Computer Assisted Remote Lifting) Control System.
Monitors Boom Angle, Boom Extension, Pressure, Counterweight Load Pin. Automatic Shutdown for overload conditions. Large easy to read display screen with push button navigation and dial adjustment.

CONTROLS:

Separate controls for each function.
Combination of foot pedal, joystick, and push button controls allows for multiple functions to be performed at the same time.

DRIVE:

Poclain MK35 drive motors (qty. 3)
(2) in front, (1) in rear steering box.

WHEELS:

Front: qty. (4)
Diameter: 28"
Width: (2) @ 16" and (2) @ 10"
Rear: qty. (2)
Diameter: 28"
Width: 16"

Replaceable polyurethane composition

STEERING:

90 degree steering of rear wheels.

OSCILLATING REAR STEERING BOX:

Keeps all steering wheels in contact with ground.

GRADABILITY:

Unloaded maximum grade is 20%
Loaded maximum grade is 10%

GROUND BEARING PRESSURE:

Loaded Front Tires: 360 psi maximum
Unloaded Rear Tires: 440 psi maximum

TRAVEL SPEED UNLOADED:

Travel Mode - High Gear = 0.0 to 1.70 mph
Travel Mode - Low Gear = 0.0 to 0.86 mph
Work Mode - Low Gear = 0.0 to 0.42 mph

TELESCOPING COUNTERWEIGHT:

Standard counterweight section telescopes 5' using (2) hydraulic cylinders. Push button control.

HYDRAULIC RESERVOIR:

200 gallons (757 liters)

BOOM:

High strength three section telescoping boom with powered first section and manually extended second section.
Replaceable wear pads on all sliding sections.

BOOM LIFT CYLINDERS:

Twin cylinders capable of lifting and lowering with a full load. Safety holding valves installed on both cylinders. Spherical bearings ensure constant alignment with the boom.

BOOM TELESCOPE CYLINDER:

Single cylinder capable of telescoping the boom in and out with a full load. Safety holding valve is installed on the cylinder.

LIFTING EYES:

Qty. one (1) centrally located on main boom and one (1) located on power boom both with 75 ton capacity.

WINCH:

Two speed high performance hydraulic winch. Integral, full capacity load brake. Wide, low profile drum. 580' - 5/8" wire rope capacity.

WEIGHT:

48,000 lbs.
Standard "A" counterweight included

COUNTERWEIGHTS:

"A" - non-removable counterweight installed in unit
"B" - qty. (2) - 7,300 lbs each. - 14,600 lbs total
"C" - qty. (1) - 8,450 lbs
"D" - qty. (1) - 8,050 lbs

TIE DOWN / LIFTING EYES:

Tie down / lifting eyes installed for securing unit during transport and for lifting of the unit.

DRIVER PROTECTION GUARD:

Structural overhead guard for operator protection.

OTHER STANDARD FEATURES:

Back up alarm, horn, strobe light, operator seat complete with safety belt and electric switch.

OPTIONAL EQUIPMENT

RADIO REMOTE CONTROL:

Radio remote control allows full machine functionality from a wireless radio remote. Allows operator optimal view of load. Emergency safety shutdown switch is standard.

65 TON SPINNER:

Allows for 360 degree rotation of load from picking eye.

EXHAUST PURIFIER:

Reduces diesel particulate matter.

JIB EXTENSION:

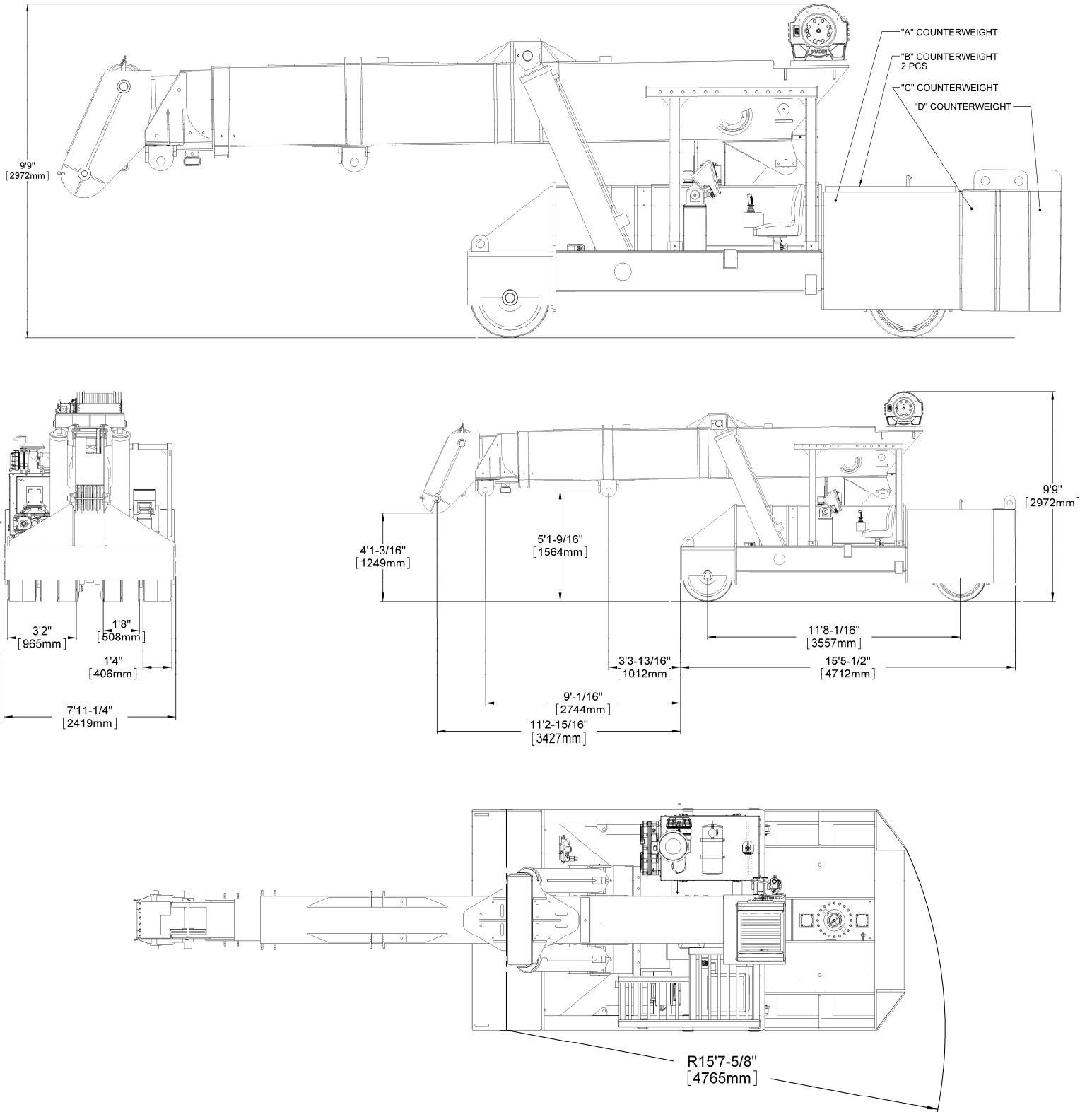
Consult factory for available capacities



MOBILIFT

75 TON

DIMENSIONAL DATA

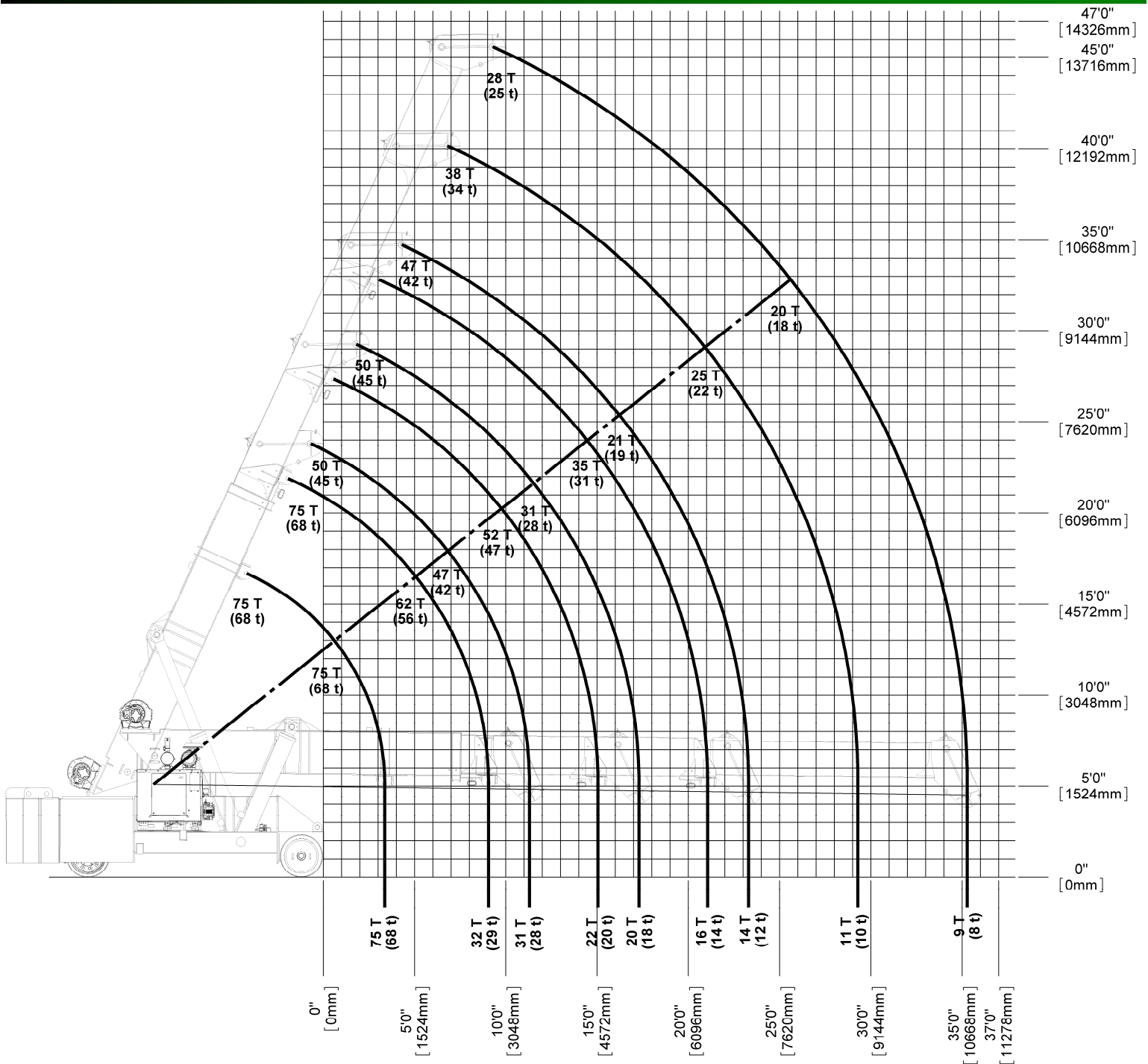




MOBILIFT

75 TON

REFERENCE CAPACITY / RANGE DIAGRAM



NOTE

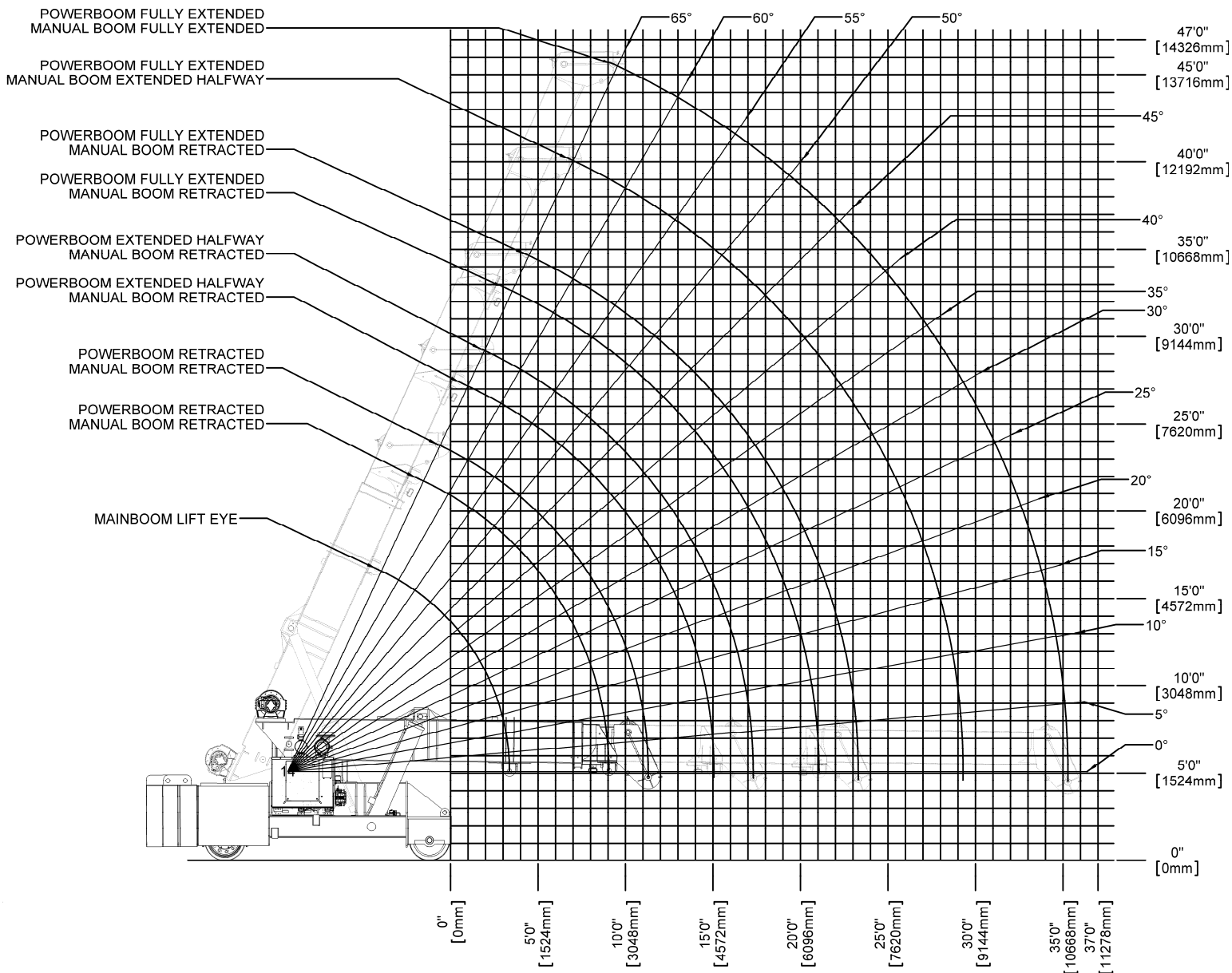
1. The above chart is for reference purposes only.
2. Never use the above chart for lift planning calculations
3. Lift plan calculations are to be determined solely by the load charts and range diagrams that are issued for the specific serial numbered machine that is to be used for the specific planned lift.



MOBILIFT

75 TON

RANGE DIAGRAM



NOTE

1. The above chart is for reference purposes only.
2. Never use the above chart for lift planning calculations
3. Lift plan calculations are to be determined solely by the load charts and range diagrams that are issued for the specific serial numbered machine that is to be used for the specific planned lift.



MOBILIFT

75 TON

LOAD CHARTS FOR "A" COUNTERWEIGHT (HOOK BLOCK)

LOAD RADIUS (FEET FROM FRONT)	75 TON MOBILIFT LOAD CHART FOR USE WITH HOOK BLOCK ONLY STANDARD NON-REMOVABLE "A" COUNTERWEIGHT												MLLC105 1/17/2001
	FULLY EXTENDED BOOM LENGTH (FEET)						FULLY RETRACTED BOOM LENGTH (FEET)						
	△°	20	32	44	△°	20	32	44					
0	63	100,000			63	100,000							
1	60	100,000			60	100,000							
2	57	99,400			57	78,900							
3	54	75,300			54	59,400							
4	50	60,200			50	47,400							
5	46	50,000	64	49,200	46	39,200	64	38,400					
6	42	42,500	62	41,800	42	33,200	62	32,500					
7	38	36,900	60	36,200	38	28,700	60	28,000					
8	33	32,400	58	31,800	33	25,100	58	24,500					
9	28	28,900	56	28,200	28	22,300	56	21,600					
10	21	25,900	54	25,300	21	19,900	54	19,300					
11	10	23,500	52	22,900	10	17,900	52	17,400					
12	SEE NOTE (E)		49	20,800	62	21,900	49	15,700					
13			47	19,000	60	20,100	47	14,300					
14			45	17,500	59	18,500	45	13,000					
15			42	16,100	57	17,100	42	12,000					
16			39	14,900	56	15,900	39	11,000					
17			36	13,900	54	14,800	36	10,100					
18			33	12,900	52	13,800	33	9,400					
19			30	12,000	51	13,000	30	8,700					
20			26	11,200	49	12,200	26	8,000					
21			22	10,500	47	11,400	22	7,500					
22			16	9,900	46	10,800	16	7,000					
23			8	9,300	44	10,200	8	6,500					
24					42	9,600							
25					40	9,100							
26					38	8,600							
27					36	8,200							
28					33	7,700							
29					31	7,400							
30					28	7,000							
31					26	6,700							
32					22	6,300							
33					19	6,000							
34					14	5,700							
35					7	5,500							

NOTES:
 A) FLY SECTION CAPACITIES ARE LIMITED BY ANGLE. DO NOT USE LOAD RADIUS WHEN USING FLY SECTION.
 B) RATINGS ABOVE THE BOLD LINE ARE BASED ON THE MACHINE'S HYDRAULIC OR STRUCTURAL STRENGTH AND NOT STABILITY.
 C) RATINGS BELOW THE BOLD LINE ARE BASED ON 85% OF TIPPING.
 D) ALL CAPACITIES ARE IN POUNDS.
 E) TELESCOPE CYLINDER MUST BE FULLY RETRACTED AND AGAINST STOPS.

WARNING:
 FOR BOOM LENGTHS LESS THAN 44' WITH FLY SECTION EXTENDED, THE RATED LOADS ARE DETERMINED BY BOOM ANGLE ONLY. IN THE COLUMN HEADED BY 44' BOOM, FOR BOOM ANGLES NOT SHOWN USE RATINGS OF THE NEXT LOWER BOOM ANGLE.
 CAUTION!
 DO NOT EXTEND OR RETRACT COUNTERWEIGHT WITH ANY LOAD SUSPENDED ON HOOK OR FORKS.

LOAD CHARTS FOR "A" AND "B" COUNTERWEIGHT (HOOK BLOCK)

LOAD RADIUS (FEET FROM FRONT)	75 TON MOBILIFT LOAD CHART FOR USE WITH HOOK BLOCK ONLY STANDARD NON-REMOVABLE "A" COUNTERWEIGHT WITH "B" COUNTERWEIGHT ADDED												MLLC106 1/17/2001
	FULLY EXTENDED BOOM LENGTH (FEET)						FULLY RETRACTED BOOM LENGTH (FEET)						
	△°	20	32	44	△°	20	32	44					
0	63	100,000			63	100,000							
1	60	100,000			60	100,000							
2	57	100,000			57	100,000							
3	54	100,000			54	92,400							
4	50	98,400			50	74,100							
5	46	82,100	64	81,300	46	61,700	64	60,900					
6	42	70,200	62	69,500	42	52,600	62	51,900					
7	38	61,200	60	60,600	38	45,800	60	45,100					
8	33	54,200	58	53,500	33	40,400	58	39,700					
9	28	48,500	56	47,900	28	36,000	56	35,400					
10	21	43,800	54	43,200	21	32,400	54	31,900					
11	10	39,900	52	39,300	10	29,400	52	28,900					
12	SEE NOTE (E)		49	36,000	62	37,100	49	26,400					
13			47	33,200	60	34,200	47	24,200					
14			45	30,700	59	31,700	45	22,300					
15			42	28,500	57	29,500	42	20,600					
16			39	26,600	56	27,600	39	19,200					
17			36	24,900	54	25,900	36	17,900					
18			33	23,400	52	24,300	33	16,700					
19			30	22,000	51	22,900	30	15,700					
20			26	20,700	49	21,700	26	14,700					
21			22	19,600	47	20,500	22	13,800					
22			16	18,600	46	19,400	16	13,000					
23			8	17,600	44	18,500	8	12,300					
24					42	17,600							
25					40	16,800							
26					38	16,000							
27					36	15,300							
28					33	14,600							
29					31	14,000							
30					28	13,500							
31					26	12,900							
32					22	12,400							
33					19	11,900							
34					14	11,500							
35					7	11,000							

NOTES:
 A) FLY SECTION CAPACITIES ARE LIMITED BY ANGLE. DO NOT USE LOAD RADIUS WHEN USING FLY SECTION.
 B) RATINGS ABOVE THE BOLD LINE ARE BASED ON THE MACHINE'S HYDRAULIC OR STRUCTURAL STRENGTH AND NOT STABILITY.
 C) RATINGS BELOW THE BOLD LINE ARE BASED ON 85% OF TIPPING.
 D) ALL CAPACITIES ARE IN POUNDS.
 E) TELESCOPE CYLINDER MUST BE FULLY RETRACTED AND AGAINST STOPS.

WARNING:
 FOR BOOM LENGTHS LESS THAN 44' WITH FLY SECTION EXTENDED, THE RATED LOADS ARE DETERMINED BY BOOM ANGLE ONLY. IN THE COLUMN HEADED BY 44' BOOM, FOR BOOM ANGLES NOT SHOWN USE RATINGS OF THE NEXT LOWER BOOM ANGLE.
 CAUTION!
 DO NOT EXTEND OR RETRACT COUNTERWEIGHT WITH ANY LOAD SUSPENDED ON HOOK OR FORKS.

NOTE:

Specifications are provided in imperial dimensions. All equipment dimensions, designs, specifications, calculations, etc., as described, are subject to change at manufacturer's discretion at any time and without notice. Weights are approximate and may vary. Data herein is for informational purposes only and will not be construed to guarantee suitability of equipment for any particular as performance may vary with conditions encountered. Warranty will apply as written in standard contract form upon purchase of equipment. Capacities are for reference only and must not be used for any serial numbered machine. Serial numbered load charts may be obtained from Lift Systems, Inc.



MOBILIFT

75 TON

LOAD CHARTS FOR "A", "B", AND "C" COUNTERWEIGHT (HOOK BLOCK)

LOAD RADIUS (FEET FROM FRONT)	75 TON MOBILIFT LOAD CHART												MLLC107
	STANDARD NON-REMOVABLE "A" COUNTERWEIGHT WITH "B", "C" COUNTERWEIGHT ADDED												1/17/2001
	FULLY EXTENDED BOOM LENGTH (FEET)						FULLY RETRACTED BOOM LENGTH (FEET)						
	△°	20	32	44	MANUAL FLY SECTION	△°	20	32	44	MANUAL FLY SECTION			
0	63	100,000				63	100,000						
1	60	100,000				60	100,000						
2	57	100,000				57	100,000						
3	54	100,000				54	100,000						
4	50	100,000				50	94,200						
5	46	100,000	64	94,000	LOADED BOOM ANGLE	46	78,600	64	77,800	LOADED BOOM ANGLE			
6	42	89,700	62	89,000		42	67,200	62	66,500				
7	38	78,400	60	77,700		38	58,800	60	57,900				
8	33	69,500	58	68,800		33	51,800	58	51,100				
9	28	62,300	56	61,700		28	46,300	56	45,700				
10	21	56,400	54	55,800		21	41,900	54	41,300		64	42,400	
11	10	51,500	52	50,900		10	38,100	52	37,500		63	38,600	
12	SEE NOTE (E)		49	48,700		SEE NOTE (E)		49	34,400		62	35,400	
13			47	43,100				47	31,600		60	32,700	
14			45	40,000				45	29,200		59	30,300	
15			42	37,300				42	27,200		57	28,200	
16			39	34,800				39	25,300		56	26,300	
17			36	32,700				36	23,700		54	24,600	
18			33	30,700				33	22,200		52	23,200	
19			30	29,000				30	20,900		51	21,800	
20			26	27,400				26	19,700		49	20,600	
21			22	26,000				22	18,600		47	19,500	
22			16	24,700				16	17,600		46	18,500	
23			8	23,400				8	16,700		44	17,600	
24											42	16,700	
25											40	15,900	
26											38	15,200	
27											36	14,500	
28											33	13,900	
29											31	13,300	
30											28	12,700	
31											26	12,200	
32											22	11,700	
33											19	11,300	
34											14	10,800	
35											7	10,400	

LOAD CHARTS FOR "A", "B", "C", AND "D" COUNTERWEIGHT (HOOK BLOCK)

LOAD RADIUS (FEET FROM FRONT)	75 TON MOBILIFT LOAD CHART												MLLC108
	STANDARD NON-REMOVABLE "A" COUNTERWEIGHT WITH "B", "C", "D" COUNTERWEIGHT ADDED												1/17/2001
	FULLY EXTENDED BOOM LENGTH (FEET)						FULLY RETRACTED BOOM LENGTH (FEET)						
	△°	20	32	44	MANUAL FLY SECTION	△°	20	32	44	MANUAL FLY SECTION			
0	63	100,000				63	100,000						
1	60	100,000				60	100,000						
2	57	100,000				57	100,000						
3	54	100,000				54	100,000						
4	50	100,000				50	100,000						
5	46	100,000	64	94,000	LOADED BOOM ANGLE	46	95,500	64	94,000	LOADED BOOM ANGLE			
6	42	100,000	62	89,000		42	81,800	62	81,000				
7	38	95,300	60	84,000		38	71,400	60	70,700				
8	33	84,600	58	80,000		33	63,200	58	62,600				
9	28	76,000	56	75,400		28	56,700	56	56,100				
10	21	68,900	54	68,300		21	51,300	54	50,700		64	51,800	
11	10	62,900	52	62,300		10	46,700	52	46,200		63	47,300	
12	SEE NOTE (E)		49	57,300		SEE NOTE (E)		49	42,400		62	43,400	
13			47	53,000				47	39,100		60	40,100	
14			45	49,200				45	36,200		59	37,200	
15			42	45,900				42	33,700		57	34,700	
16			39	43,000				39	31,500		56	32,400	
17			36	40,400				36	29,500		54	30,500	
18			33	38,000				33	27,700		52	28,700	
19			30	35,900				30	26,100		51	27,100	
20			26	34,000				26	24,700		49	25,600	
21			22	32,300				22	23,400		47	24,300	
22			16	30,700				16	22,200		46	23,100	
23			8	29,200				8	21,100		44	21,900	
24											42	20,900	
25											40	20,000	
26											38	19,100	
27											36	18,300	
28											33	17,500	
29											31	16,800	
30											28	16,100	
31											26	15,500	
32											22	14,900	
33											19	14,400	
34											14	13,900	
35											7	13,400	

NOTE:

Specifications are provided in imperial dimensions. All equipment dimensions, designs, specifications, calculations, etc., as described, are subject to change at manufacturer's discretion at any time and without notice. Weights are approximate and may vary. Data herein is for informational purposes only and will not be construed to guarantee suitability of equipment for any particular as performance may vary with conditions encountered. Warranty will apply as written in standard contract form upon purchase of equipment. Capacities are for reference only and must not be used for any serial numbered machine. Serial numbered load charts may be obtained from Lift Systems, Inc.



MOBILIFT

75 TON

POWER BOOM LIFTING EYE LOAD CHARTS

LOAD RADIUS FEET FROM FRONT	COUNTERWEIGHT RETRACTED				MLLC101 1/19/2001
	"A"	"AB"	"ABC"	"ABCD"	"ABCD"
0	150,000	150,000	150,000	150,000	
1	112,000	150,000	150,000	150,000	
2	76,500	119,600	144,000	144,000	
3	57,600	90,600	115,400	138,000	
4	45,800	72,600	92,700	112,800	
5	37,800	60,300	77,200	94,100	
6	32,000	51,400	66,000	80,500	
7	27,500	44,600	57,400	70,300	
8	24,100	39,300	50,800	62,200	
9	21,300	35,100	45,400	55,700	

LOAD RADIUS FEET FROM FRONT	COUNTERWEIGHT EXTENDED				MLLC102 1/19/2001
	"A"	"AB"	"ABC"	"ABCD"	"ABCD"
0	150,000	150,000	150,000	150,000	
1	141,700	150,000	150,000	150,000	
2	97,200	144,000	144,000	144,000	
3	73,400	120,500	138,000	138,000	
4	58,700	96,900	123,700	134,000	
5	48,600	80,700	103,300	125,600	
6	41,300	69,000	88,500	107,800	
7	35,700	60,100	77,300	94,200	
8	31,400	53,100	68,400	83,600	
9	27,900	47,500	61,400	75,000	

MAIN BOOM LIFTING EYE LOAD CHARTS

LOAD RADIUS FEET FROM FRONT	COUNTERWEIGHT RETRACTED				MLLC103 1/17/2001
	"A"	"AB"	"ABC"	"ABCD"	"ABCD"
POWER SECTION BOOM FULLY RETRACTED					
0	150,000	150,000	150,000	150,000	
1	102,400	150,000	150,000	150,000	
2	69,200	112,200	144,500	150,000	
3	51,500	84,500	109,300	134,100	
3.25	47,900	78,900	102,100	125,300	

LOAD RADIUS FEET FROM FRONT	COUNTERWEIGHT EXTENDED				MLLC104 1/17/2001
	"A"	"AB"	"ABC"	"ABCD"	"ABCD"
POWER SECTION BOOM FULLY RETRACTED					
0	150,000	150,000	150,000	150,000	
1	132,100	150,000	150,000	150,000	
2	89,900	150,000	150,000	150,000	
3	67,400	114,500	147,600	150,000	
3.25	62,800	106,900	138,000	150,000	

NOTE:

The power section boom must be fully retracted.

The ratings above the bold line are based upon machine's hydraulic or structural strength and not stability.

Ratings below bold line are based on 85% of tipping.

All capacities are in pounds.

CAUTION!

Do not extend or retract counterweight with any load suspended on hook.

LIFT SYSTEMS, INC.

OFFICE:
1505 - 7th Street
East Moline, IL 61244

MAILING ADDRESS:
P.O. Box 906
Moline, IL 61266

TEL: +1-309-764-9842
FAX: +1-309-764-9848
EMAIL: liftit@lift-systems.com
WEB: www.lift-systems.com